



1002 Turnberry Circle



5 bedrooms + Loft



5 baths



3,939 sq.ft.



2 car garage



Finished basement included

LUXURY DESIGN  
SUSTAINABLE LIFESTYLE



Text or call for more information:

NICOLE O'NEILL

720-734-3905





## 1002 Turnberry Circle, Louisville

- Large great room with wall of windows | doors, two of which open to extended outdoor living space
- High-end finishes throughout
- 2 fireplaces - one in great room and one at covered patio | outdoor living area
- Gracious entry off of large covered porch gives unbroken sight line to great room windows
- Classic turned staircase features large landing and open handrail on both sides
- Loft area may be converted to optional 6<sup>th</sup> bedroom
- Lavish kitchen appointed with top-of-the-line appliances, large island, and dining area surrounded by windows
- Full bath on main level situated with convenient access to 4th bedroom
- Palatial 2nd-story primary suite tucked privately on the opposite side from bedrooms 2, 3, and laundry
- Spacious secondary bedrooms, each with a dedicated bathroom
- Finished basement adds rec room, game area, wet bar, bedroom, and full bath
- Build with EnergyStar 3.2 rated specifications for top efficiency



Sheffield  
HOMES

COLORADO ROOTS | CUSTOMER DRIVEN

For nearly fifty years, Sheffield Homes has been crafting custom homes that reflect the unique needs and lifestyles of our clients. Serving the Denver Metro and surrounding areas, our team of experienced builders and designers work with you every step of the way to ensure that your home is truly a reflection of you. Our commitment to quality, transparency, and customer satisfaction is what sets us apart.

ACTUAL FLOOR PLAN MAY VARY FROM DIAGRAM SHOWN



Sheffield  
HOMES

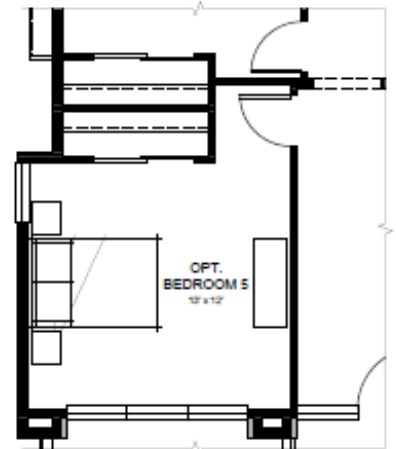
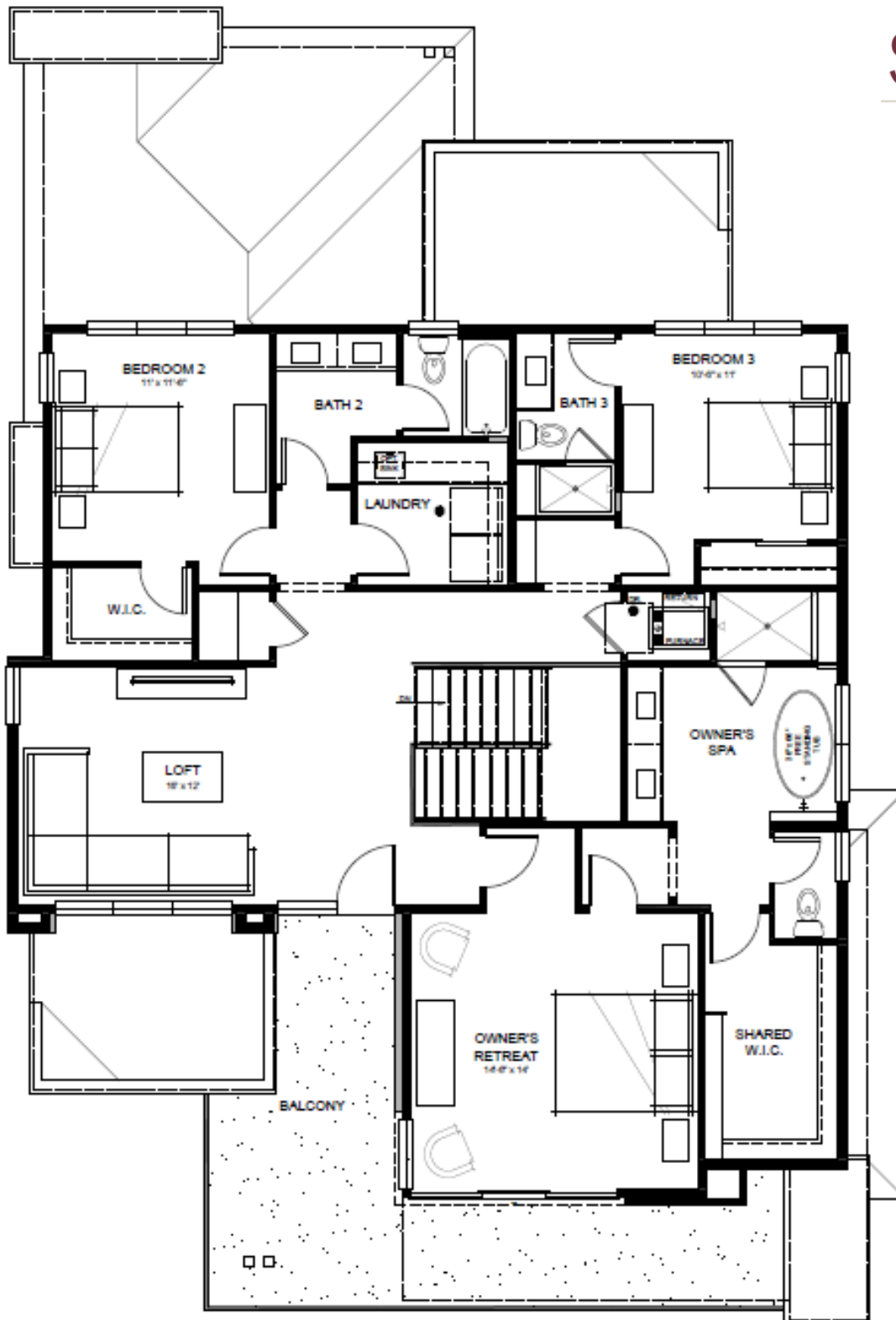


MAIN LEVEL FLOOR PLAN • 1,408 SQ FT

ACTUAL FLOOR PLAN MAY VARY FROM DIAGRAM SHOWN



Sheffield  
HOMES



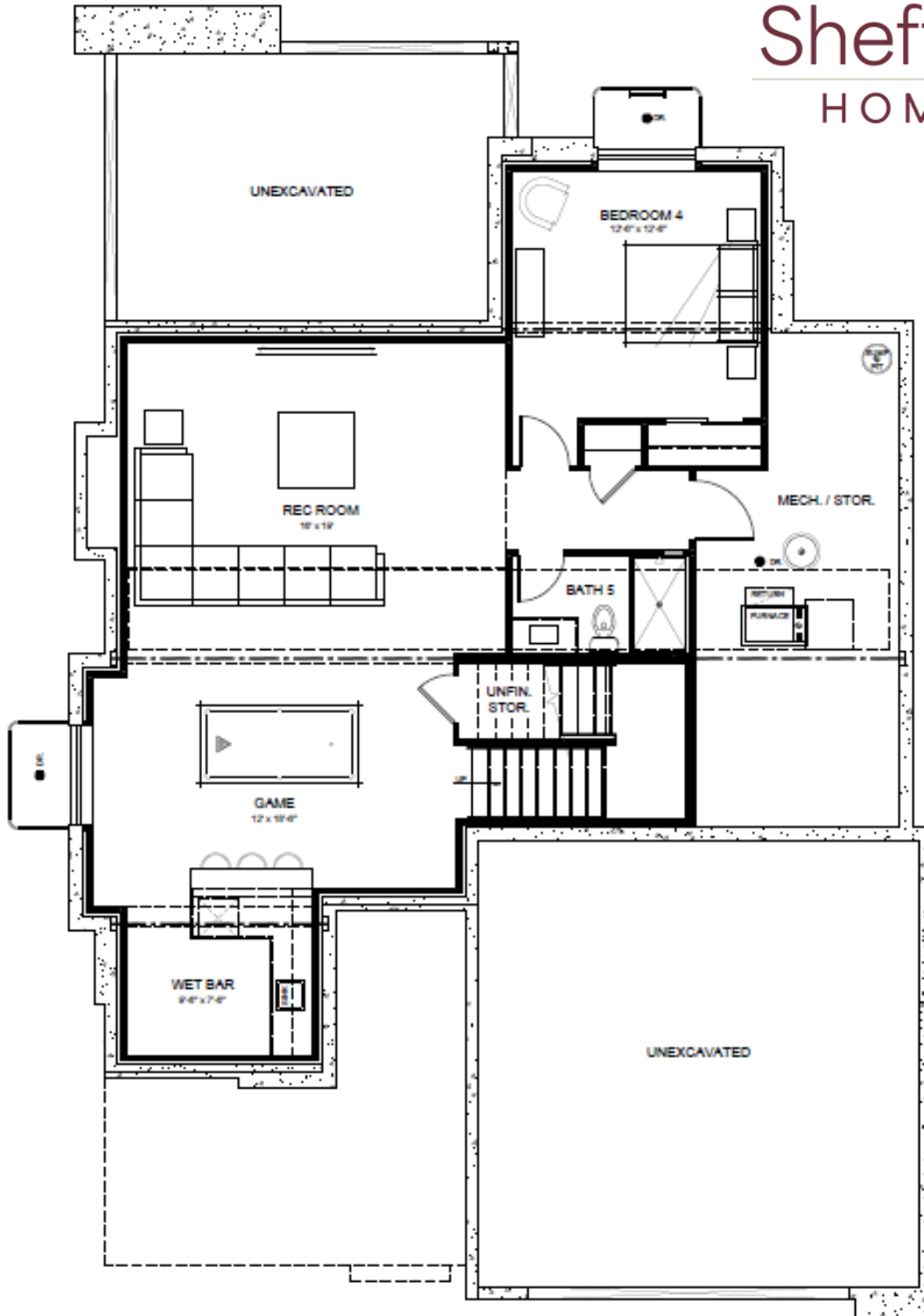
OPTIONAL BEDROOM 5  
(IN LIEU OF LOFT)

UPPER LEVEL FLOOR PLAN • 1,487 SQ FT

ACTUAL FLOOR PLAN MAY VARY FROM DIAGRAM SHOWN



Sheffield  
HOMES



OPTIONAL FINISHED BASEMENT PLAN • 954 SQ FT