








1302 Eldorado Drive, Superior CO

-  5 bedrooms
-  4 baths
-  3,509 sq.ft.
-  3 car garage
-  Includes 899 sf walk-out basement finish

MLS #6912267

LUXURY DESIGN INTENTIONAL LIVING



Text or call for more information

NICOLE O'NEILL

720-734-3905

1302 Eldorado Drive, Superior CO

- 2-story open concept design with spectacular mountain views
- High-end finishes throughout
- Spacious owner's entry offers convenience with double closet, and direct access to back kitchen and oversized walk-in pantry
- Gracious entry off of large covered porch gives unbroken sight line to great room windows
- Classic turned staircase features large landing and open handrail on both side
- Gas fireplace in great room adds style and ambiance
- Lavish kitchen appointed with top-of-the-line appliances, large island, and dining area surrounded by windows
- Full bath on main level situated with convenient access to 4th bedroom
- Palatial 2nd-story primary suite with generous spa-like bath, his & hers walk-in closets, and private access to deck
- Spacious secondary bedrooms on upper level with shared, adjoining bath
- Use the 4th bedroom on the main level for an office or library
- Walk-out basement finish (included) adds 899 sq. ft. of living space with rec room, 5th bedroom, and full bath
- Build with EnergyStar 3.2 rated specifications for top efficiency
- Sheffield pays buyer's agent co-op fee



COLORADO ROOTS | CUSTOMER DRIVEN

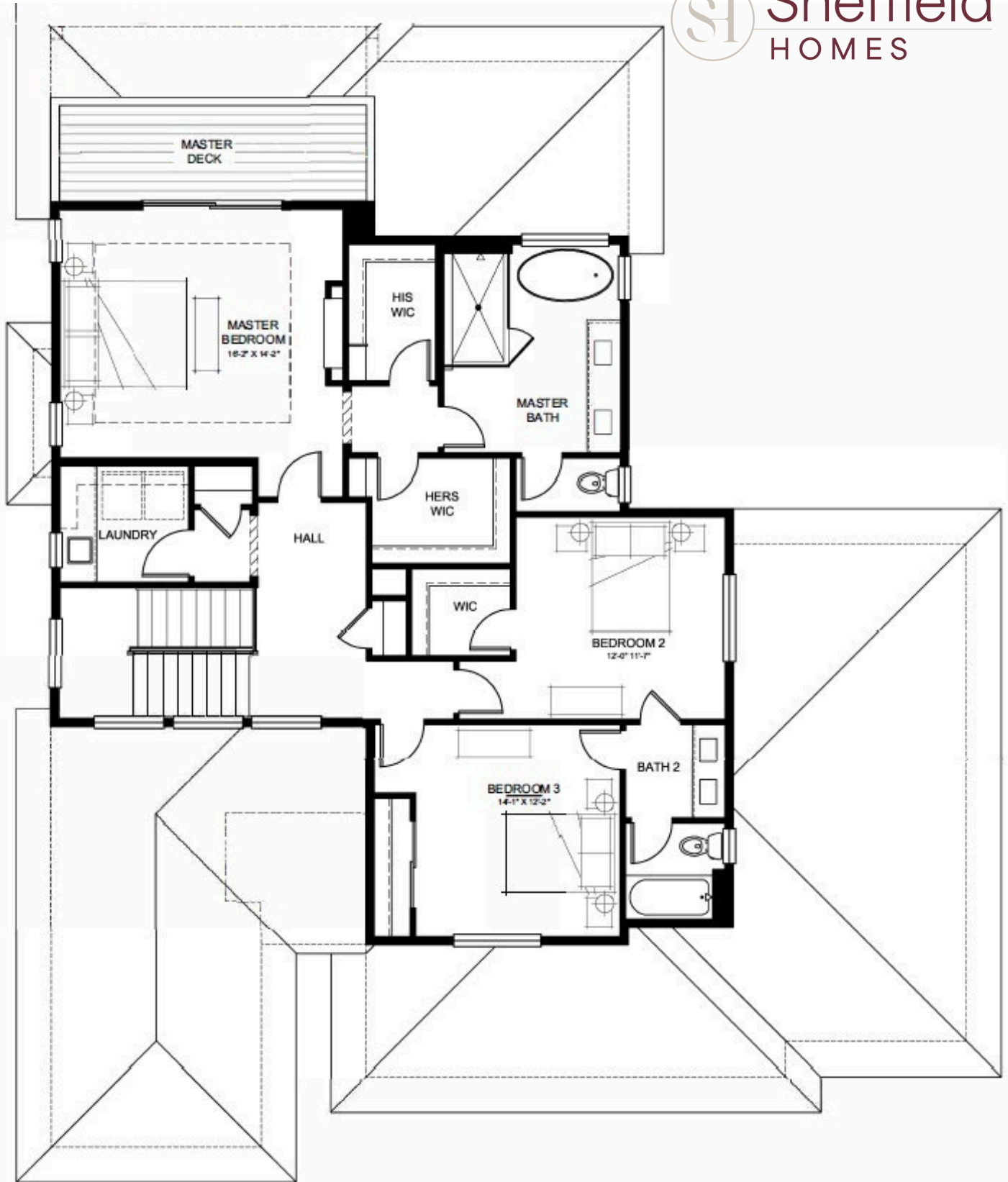
For nearly fifty years, Sheffield Homes has been crafting custom homes that reflect the unique needs and lifestyles of our clients. Serving the Denver Metro and surrounding areas, our team of experienced builders and designers work with you every step of the way to ensure that your home is truly a reflection of you. Our commitment to quality, transparency, and customer satisfaction is what sets us apart.

We Make Luxury Livable



Optional ceiling beams in Great Room

MAIN LEVEL FLOOR PLAN • 1,409 SQ FT



UPPER LEVEL FLOOR PLAN • 1,201 SQ FT



LOWER LEVEL FLOOR PLAN • 871 SQ FT