








Lot 18 - 14467 Anvil Circle, Golden - Elevation A

-  4 bedrooms, Flex room, and Study
-  6 bathrooms
-  4,187 sq.ft.
-  3-bay tandem garage
-  Reverse Walk-out

Elevation A will be built on Lot 18

MLS #1050633

STATEMENT DESIGN
ELEVATED LIVING



Text or call for more information

STEPHANIE IANNONE
DAVID TROW

720-807-4807
renegade@compass.com



14467 Anvil Circle, Golden

- Spacious reverse walk-out plan with lower-level front entrance
- Smart bedroom configuration options
- Large primary retreat with coffered ceiling, spa bath, and oversized walk-in closet with direct access to laundry room
- Access 329 sq. ft. covered deck, plus an additional 553 sq. ft. uncovered deck from large sliders in great room and primary suite
- Built-in grill at main-level deck off kitchen
- Gas fireplace in great room with optional fireplace in primary suite
- Chef's kitchen includes 48" range, custom cabinetry, and oversized island
- Dedicated prep kitchen with beverage sink, second dishwasher, and walk-in pantry
- Great room with 14' ceilings and large Pella windows creates an immediate emotional impact
- Fully finished lower level features a private guest retreat, spacious family living areas, study with built-ins, and spaces to adapt to your lifestyle
- Floating stairs with solid white oak treads
- Oversized 3-bay tandem garage for vehicles, storage, and gear
- Secondary suite on the walk-out level with private bath and walk-in closet
- Flexible spaces designed to capitalize on the beauty of indoor/outdoor living in Colorado



Sheffield
HOMES

COLORADO ROOTS | CUSTOMER DRIVEN

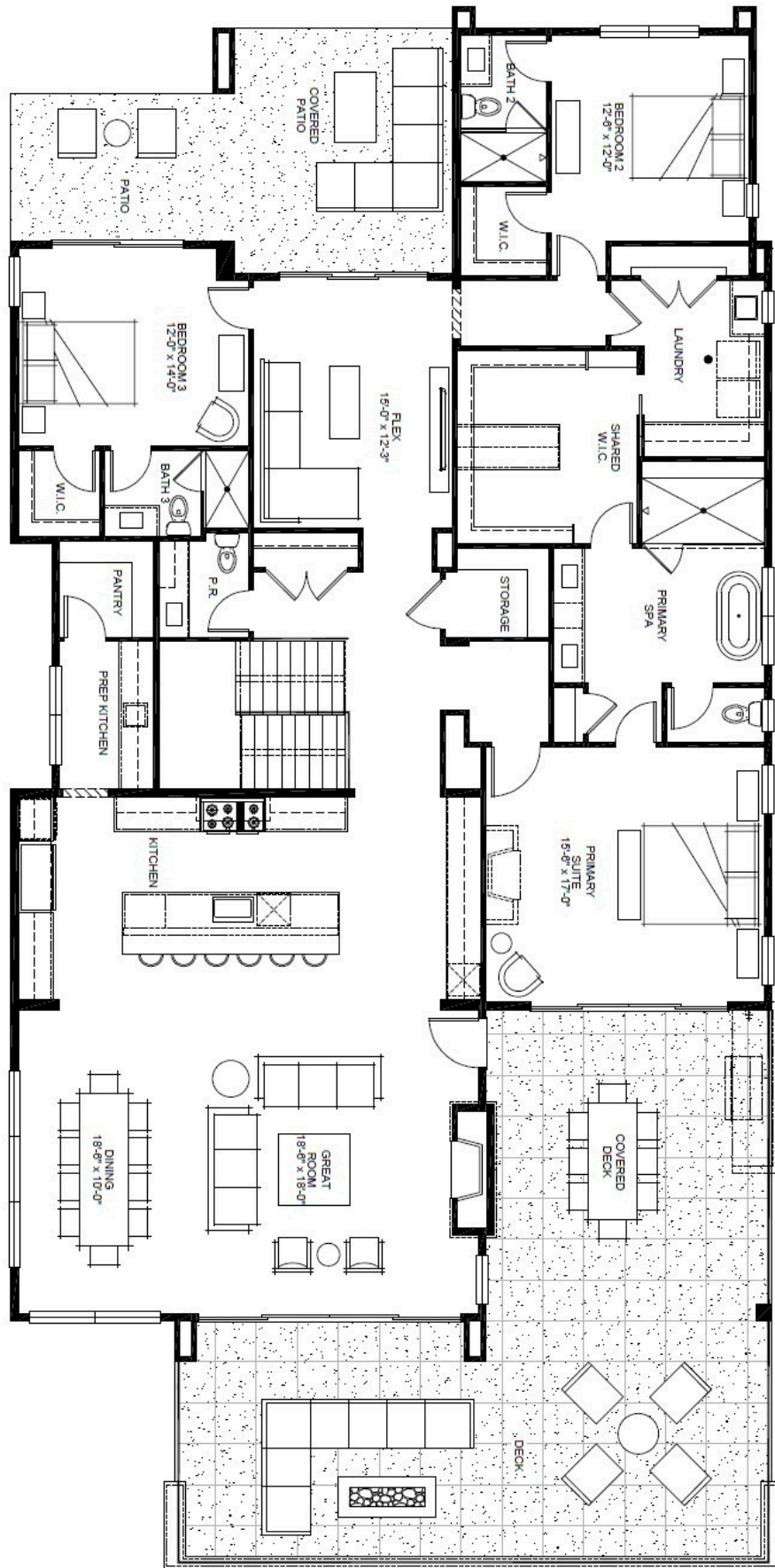
For nearly fifty years, Sheffield Homes has built custom homes tailored to the way our clients live. Serving the Denver Metro and surrounding areas, our experienced builders and designers partner with you from first concept to final detail, ensuring your home reflects your vision. We lead with quality, transparency, and a commitment to your satisfaction—values that continue to set Sheffield apart.





Sheffield HOMES

14467 Anvil Circle, Golden



PLAN 2

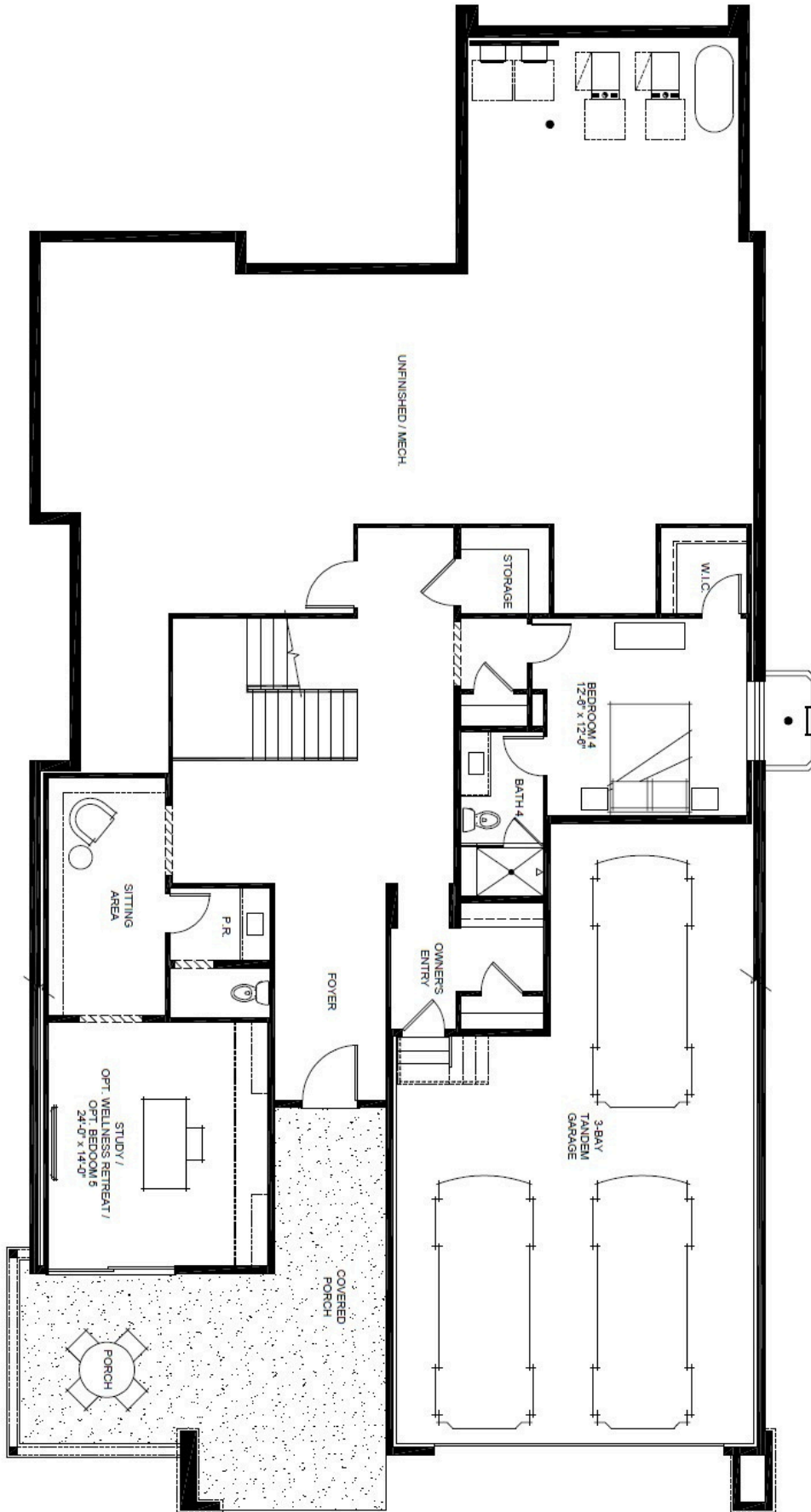
MAIN LEVEL FLOOR PLAN • 2,917 SQ FT





Sheffield HOMES

14467 Anvil Circle, Golden



PLAN 2

LOWER LEVEL FLOOR PLAN • 1,270 SQ FT

