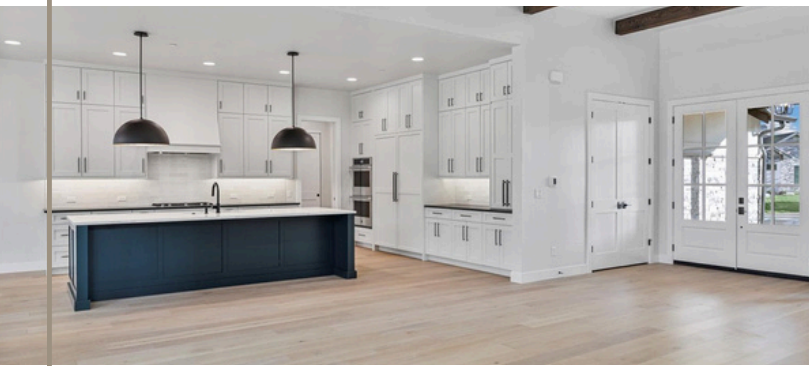


RENEGADE

AT NORTH TABLE MOUNTAIN



LIVE BOLD. LIVE ELEVATED:
A NEW LUXURY GATED COMMUNITY IN GOLDEN

Now selling homes starting from \$2.3 million



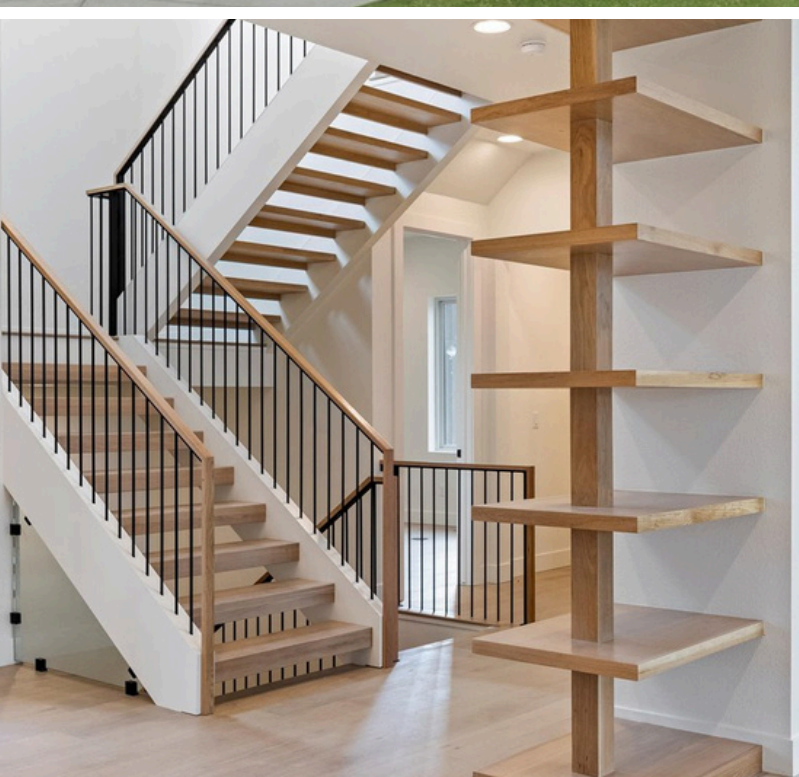
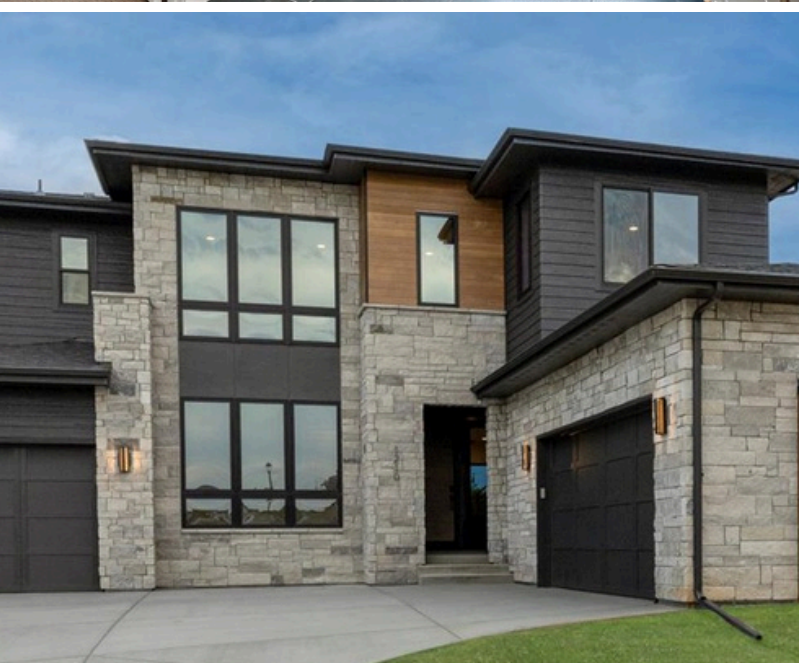
Contact for more information

NICOLE O'NEILL

720-830-2495

noneill@sheffieldhomes.com





Custom Crafted, Your Way

As Golden, Colorado's newest luxury home community, **Renegade** offers discerning buyers a statement-making place to call home.

Given the **limited number of homesites**, each designated for either a ranch or two-story plan, your one-of-a-kind residence will feature panoramic views of North Table Mountain and the Front Range.

Offering **full customization**, meticulously built with Sheffield's nearly 50 years of Colorado craftsmanship.

- Mountain Views From Every Lot
- Ranch and Two-Story Plans
- Three- and Four-Car Garages
- Energy Star Rated Homes
- Fire-Resistant Building Materials
- High-Speed Fiber Internet
- Dark Sky Lighting
- No Metro District

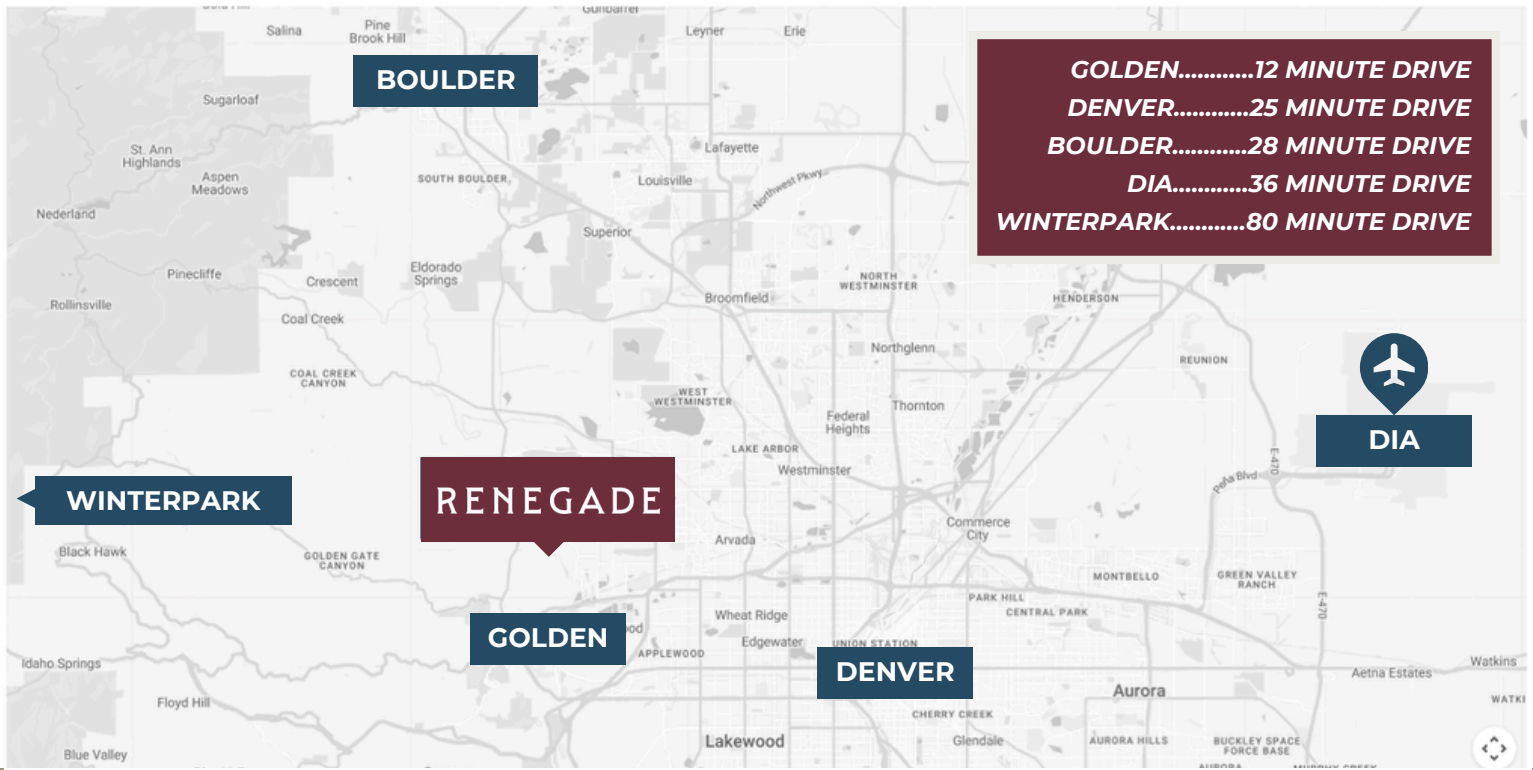
An Exclusive Opportunity

Set at the base of North Table Mountain, **Renegade** offers a rare new-home opportunity in one of Colorado's most sought after communities.

By signing up as an VIP registrant you **gain priority access** to homesite releases, semi-custom plan previews, and exclusive community updates as Renegade comes to life.

Become a VIP →





Golden Lifestyle, Elevated

Set at the base of North Table Mountain, Renegade offers a rare new-home opportunity in one of Colorado's most desirable towns. Golden blends mountain charm, vibrant community, and unmatched access to Denver and Boulder.



Endless Views

Wake up to sweeping panoramas of North Table Mountain and the Front Range—natural Colorado beauty right outside your window.



Live Where You Play

Enjoy hiking and biking right outside your door, explore 12,000 acres at Golden Gate Canyon State Park, and reach the best of the Front Range with ease.



Golden Charm

Golden pairs small community charm with modern perks—dining, breweries, shops, museums, galleries, and events from farmers markets to concerts.



Easy Access in All Directions

Your fastpass to it all—just minutes from Denver and Boulder, with effortless access to ski slopes, mountain towns, and year-round adventure.

Become a VIP →

