

EGH Plan #4

Two-story • 3 – 4 bedrooms • 3 ½ – 4 baths • 2-car garage • 3,907

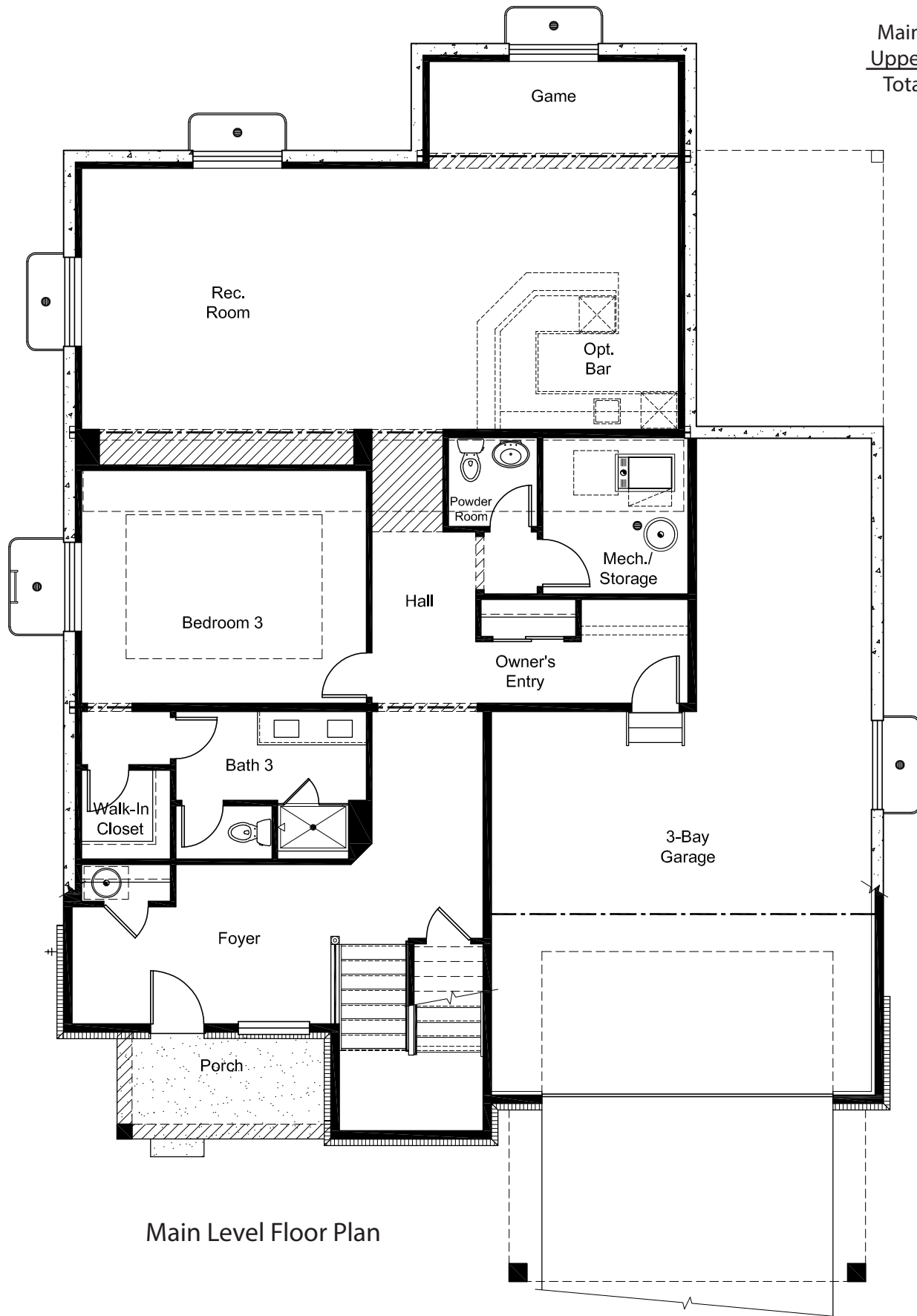
If maximum square footage is your end-game, Plan #4 delivers with just over 3,900 sq. ft. of finished living space. Designed for sloping lots with a front-facing walk-out, this adaptable plan makes the most of every nook and cranny. Traditional in appearance from the outside, you enter at the lower-level walk-out, which is the front of the home. As you step into the spacious foyer with 9' ceilings, you'll love the inviting appeal of the space, which includes a large rec room and game area, the owner's entry from the garage, and bedroom and bath #3. Head upstairs to find the gourmet kitchen, open great-room, tranquil master retreat, bedroom #2, and flex space (bedroom #4 or study).

- Optional U-shaped wet bar at rec room for gracious entertaining
- Standard covered deck off of dining room and master bedroom
- Enjoy expansive views from front deck off of great-room
- Large walk-in closets and substantial walk-in pantry
- Coffered ceiling detail in bedroom #3

Plan 4
Estates on Gage Hill



Main 1,555 sq. ft.
Upper 2,352 sq. ft.
Total 3,907 sq. ft.



Main Level Floor Plan

Room sizes are approximate. Floor plans and windows vary by elevation. Drawings are artist's conceptions and are subject to change

Plan 4
Estates on Gage Hill



Elevation A



Elevation B



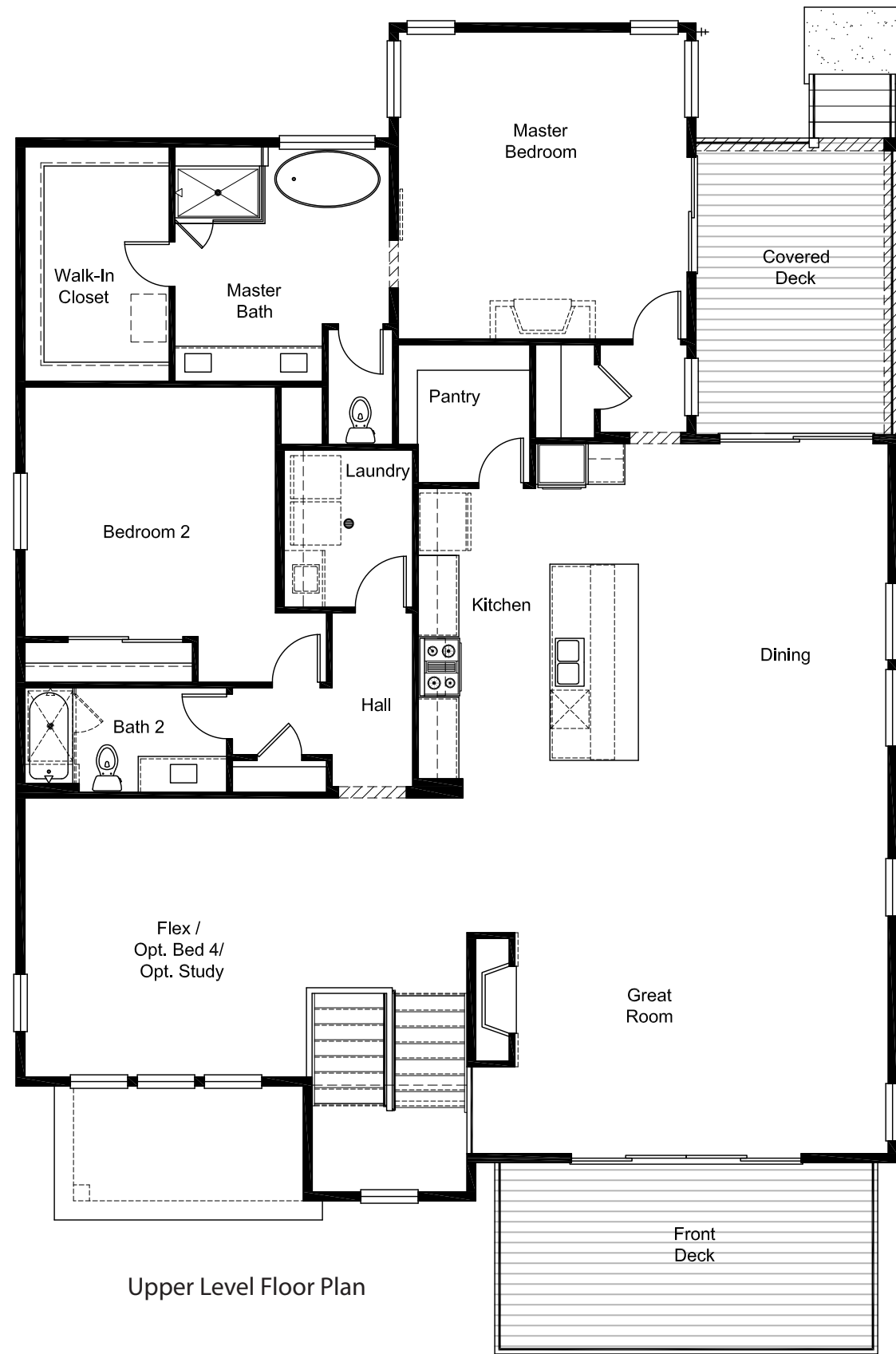
Elevation C

Room sizes are approximate. Floor plans and windows vary by elevation. Drawings are artist's conceptions and are subject to change

Plan 4

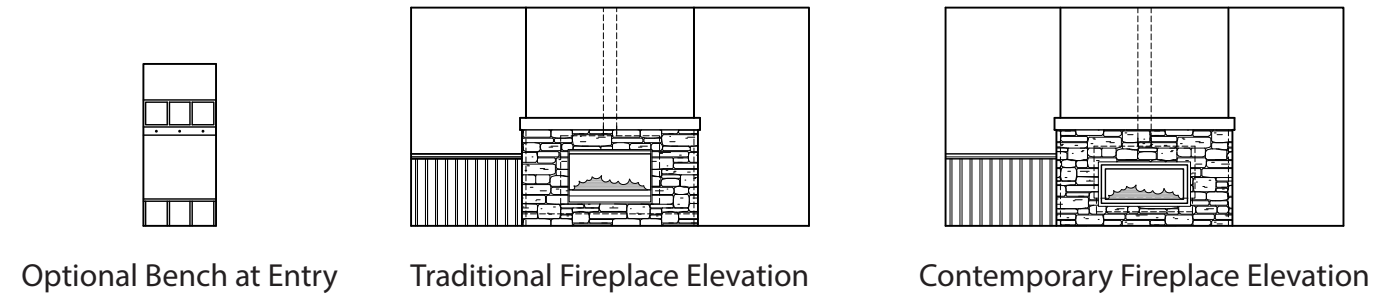
Estates on Gage Hill

Main 1,555 sq. ft.
 Upper 2,352 sq. ft.
 Total 3,907 sq. ft.



Upper Level Floor Plan

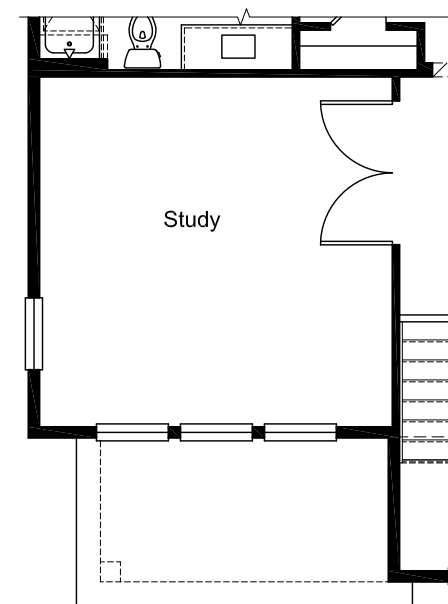
Room sizes are approximate. Floor plans and windows vary by elevation. Drawings are artist's conceptions and are subject to change



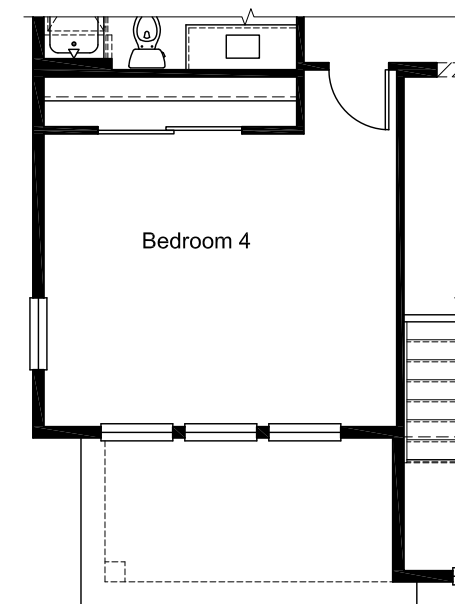
Optional Bench at Entry

Traditional Fireplace Elevation

Contemporary Fireplace Elevation



Optional Study



Optional Bedroom 4

Room sizes are approximate. Floor plans and windows vary by elevation. Drawings are artist's conceptions and are subject to change